



## Brockwell Park Row, Brixton, SW2

4 bedroom house - terraced to let

£969 Per Week

Furnished

### Property Details

Keating are proud to present this newly decorated and stunning four-bedroom townhouse overlooking the green open spaces of Brockwell Park.

The property offers four generous double bedrooms and three contemporary bathrooms, two of which are en suites. There is an exceptionally spacious living room, complemented by a separate conservatory dining area, and a large, bright, modern kitchen ideal for entertaining.

The entrance to Brockwell Park is just 10 metres from the front door, and the house also benefits from a well-proportioned paved rear garden.

Ideally located, the property is moments from a large supermarket and a selection of highly regarded independent cafés and restaurants around Brixton Water Lane. Brockwell Park — one of London's finest green spaces is quite literally on your doorstep.

Residents can enjoy everything Brixton has to offer, from the celebrated food scene of Brixton Village to its renowned music venues and vibrant nightlife. The cafés, restaurants and popular Sunday market in Herne Hill are also within easy reach via a pleasant walk through the park.

### Features

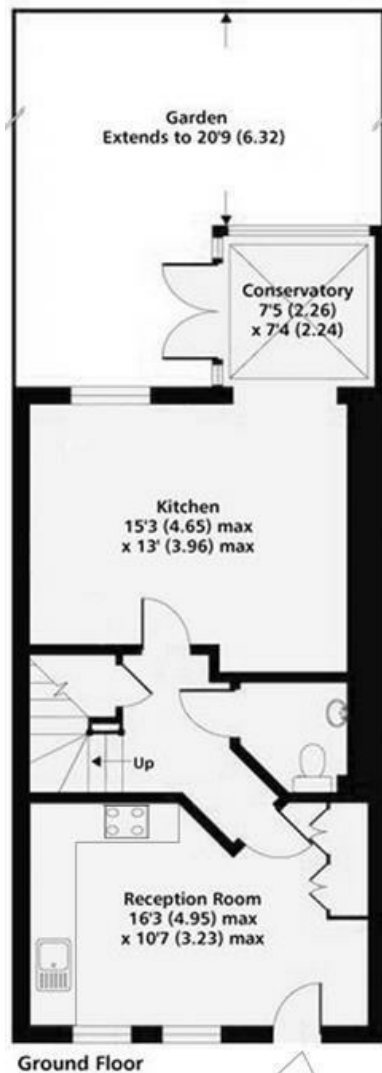
- Private garden
- Four bedrooms
- Three bathrooms
- Moments away from Brockwell park
- Conservatory
- Around a 14 minute walk to Herne Hill station
- Separate kitchen
- Newly decorated

Council tax band F      EPC rating C (76)

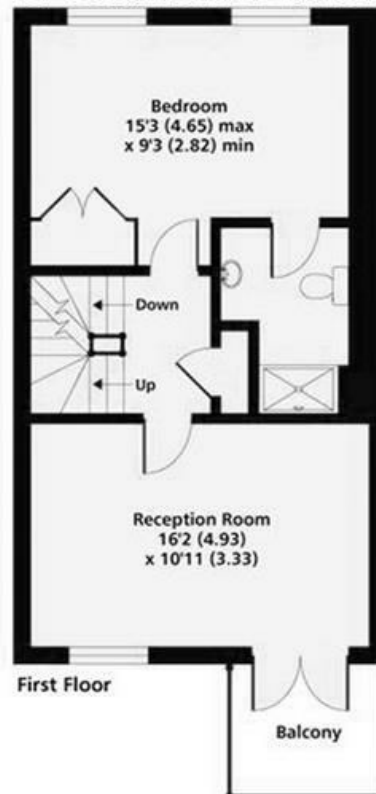




Brockwell Park Row, Brixton, SW2



## Brockwell Park Row



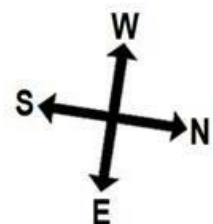
**K**

4 bed house.

Approx internal area:

1472sqft 137sqm

While we do try our very best, floor plans are produced as a guide only and we take no responsibility for the precise accuracy with which any property is represented





Brockwell Park Row, Brixton, SW2

